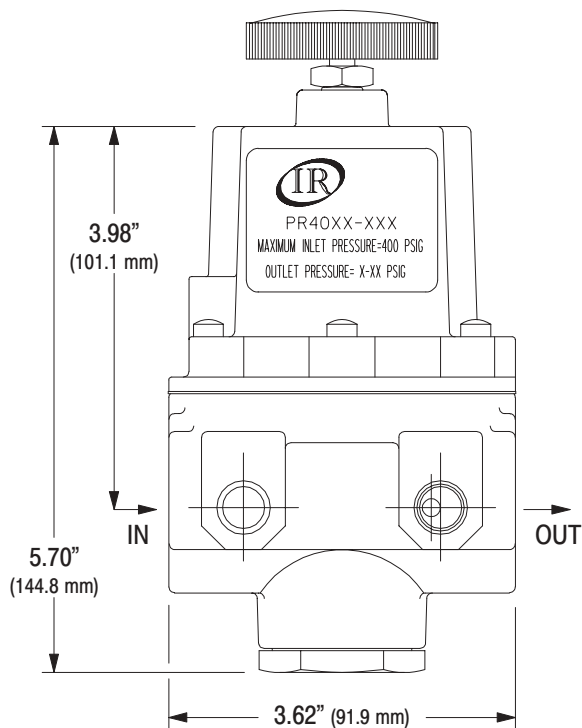
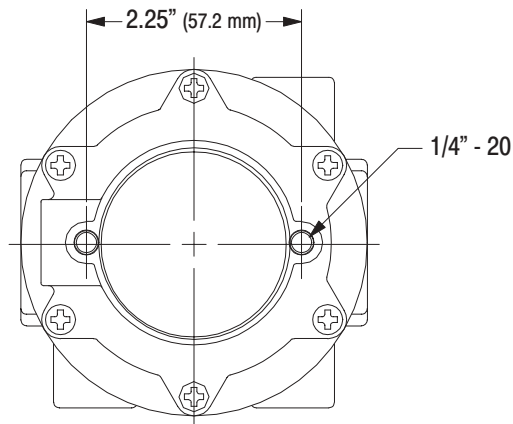


PRECISION PRESSURE REGULATOR



TECHNICAL SPECIFICATIONS

Model Number Series	PR40XX-X00
Control Range	PR40XX-200 0 - 60 p.s.i. (0 - 4.14 bar)
	PR40XX-300 0 - 30 p.s.i. (0 - 2.07 bar)
Port Size (In / Out)	PR4033-X00 3/8 - 18 N.P.T.F.
	PR4044-X00 1/2 - 14 N.P.T.F.
	PR4055-X00 3/4 - 14 N.P.T.F.
Gauge Port Size	1/4 - 18 N.P.T.F.

OPERATION CONDITIONS

Maximum Inlet Air Pressure	400 p.s.i.g. (27.6 bar)
Temperature Range	20° to 150° F (-7° to 66° C)
Application	Industrial compressed air systems

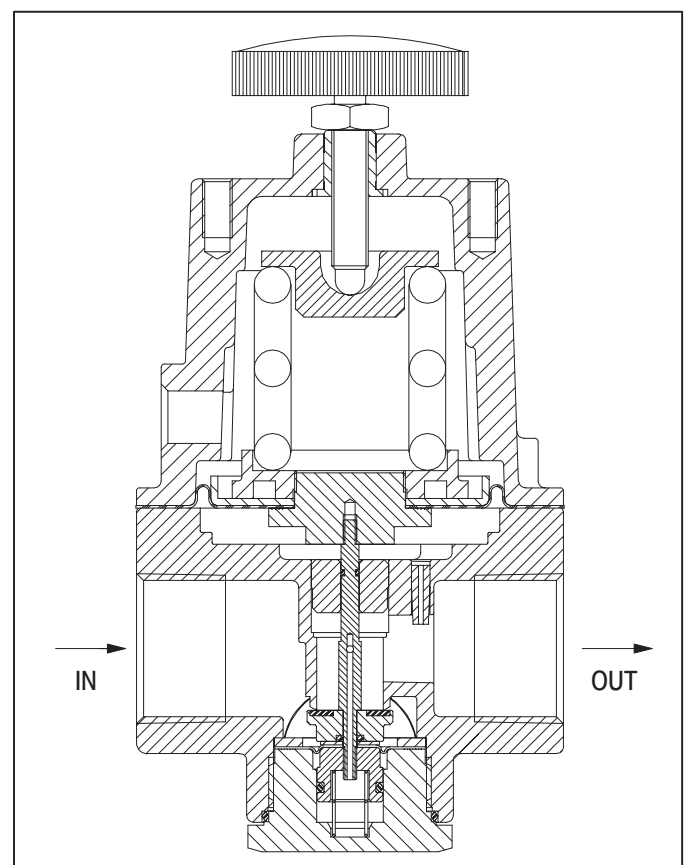
MATERIALS OF CONSTRUCTION

Body	Zinc die-cast, vinyl paint
Seals	Nitrile
Diaphragms	Nitrile
Knob	Phenolic plastic

ACCESSORIES

- 104270 Repair Kit (includes diaphragm assembly and pintle assembly)
- 104271 Mounting Bracket

CROSS SECTION



OPERATING AND SAFETY PRECAUTIONS

- Use only genuine ARO replacement parts to assure compatible pressure rating and performance.
- Read carefully all warnings and safety precautions and heed the following before operating, to avoid personal injury and / or property damage.
- Be certain anyone operating this equipment has been trained to use it safely.

⚠ WARNING COMPONENT RUPTURE. DO NOT EXCEED MAXIMUM RATED OPERATING PRESSURE OF 400 p.s.i. (27.6 bar). To avoid possible damage or personal injury, DO NOT expose the unit to excessive pressure beyond the intended working range.

⚠ WARNING TEMPERATURE LIMITS. DO NOT EXCEED MAXIMUM

TEMPERATURE LIMITS OF 150° F (66° C). Excessive temperature can affect non-metallic parts which may weaken them and cause failure.

⚠ WARNING USE WITH INDUSTRIAL COMPRESSED AIR SYSTEMS ONLY. DO NOT USE WITH BOTTLED GAS PRODUCTS OR FLUIDS. MISAPPLICATIONS CAN RESULT IN COMPONENT FAILURE AND INJURY.

⚠ WARNING DISASSEMBLY HAZARD. DO NOT DISASSEMBLE THIS UNIT WHEN IT IS UNDER PRESSURE. SHUT OFF AND RELIEVE AIR SUPPLY BEFORE ATTEMPTING SERVICE OR DISASSEMBLY PROCEDURES. Isolate the unit by closing the line valve or disconnect the supply line or hose.

INSTALLATION

- Clean out all air lines thoroughly to remove dirt and scale. If the air line contains water, sludge or foreign materials, a filter (5 micron is recommended) should be installed on the upstream side to protect the regulator.
- Install regulator as close as possible to the air operated equipment and upstream from the lubricator for best performance.
- Apply a small amount of compound to the male threads only and install the regulator so that the flow is in accordance with the ports indicated "IN" and "OUT".
- Make sure all connections are tight and that the exhaust vents in the side of the regulator are not blocked.
- The regulator can be mounted in any position without affecting the operation. For panel mounting, the panel mounting nut should be tightened to a torque of 60 in. lbs (6.8 Nm).
- A pressure gauge may be attached to the regulator by removing the

gauge port plug.

- After a regulator has been installed in the air line, the adjustment knob should be turned counterclockwise until compression is released from the pressure control spring. This prevents over pressurizing the air operated equipment when the air supply is turned on.

OPERATION

- Turn clockwise to increase pressure.
- Turn counterclockwise to decrease pressure.
- Back off the pressure adjusting knob before putting the regulator into initial operation. Turn on the supply slowly and then turn the adjusting knob until the desired output pressure is reached. It is recommended that the upstream supply pressure be at least 20 p.s.i. more than the regulated pressure.